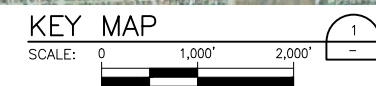




NOTES:  
1. REFER TO NOTES ON SHEET 00G-01.



| ISSUE | DATE       | DESCRIPTION    |
|-------|------------|----------------|
| 0     | 09-01-2020 | ISSUE FOR BIDS |

|                 |               |
|-----------------|---------------|
| PROJECT MANAGER | CAMERON PERRY |
| DESIGNED BY     | C. PERRY      |
| DRAWN BY        | F. MARTINEZ   |
| CHECKED BY      | D. HEILMAN    |
| PROJECT NUMBER  | 10189630      |



KEY MAP

FILENAME | 00G-02  
SCALE | AS SHOWN

SHEET  
**00G-02**





- NOTES:**
1. REFER TO NOTES ON SHEET 00G-01.
  2. SURVEY POINTS ON THIS SHEET REPRESENT MULTIPLE SURVEYS AND ARE SHOWN WITH THE SAME MARKER FOR CLARITY. SEE PARTIAL PLAN SHEETS 01C-02, 01C-03, AND LEGEND ON SHEET 00G-01 FOR SURVEY DATES.

**OVERALL EXISTING CONDITIONS**

SCALE: 0 1,000' 2,000'



HDR Engineering, Inc.  
 TBPELS Firm  
 Registration No. F-754

| ISSUE | DATE       | DESCRIPTION    |
|-------|------------|----------------|
| 0     | 09-01-2020 | ISSUE FOR BIDS |

|                        |               |
|------------------------|---------------|
| <b>PROJECT MANAGER</b> | CAMERON PERRY |
| DESIGNED BY            | C. PERRY      |
| DRAWN BY               | F. MARTINEZ   |
| CHECKED BY             | D. HEILMAN    |
| <b>PROJECT NUMBER</b>  | 10189630      |



**DOLLAR BAY MARSH RESTORATION**

**OVERALL EXISTING CONDITIONS**

FILENAME | 01C-01.DWG  
 SCALE | AS SHOWN

SHEET  
**01C-01**





NOTES:  
1. REFER TO NOTES ON SHEET 00G-01.

EXISTING CONDITIONS - SITE 1  
SCALE: 0 200' 400'  
1  
00G-02



| ISSUE | DATE       | DESCRIPTION    |
|-------|------------|----------------|
| 0     | 09-01-2020 | ISSUE FOR BIDS |

|                 |               |
|-----------------|---------------|
| PROJECT MANAGER | CAMERON PERRY |
| DESIGNED BY     | C. PERRY      |
| DRAWN BY        | F. MARTINEZ   |
| CHECKED BY      | D. HEILMAN    |
| PROJECT NUMBER  | 10189630      |



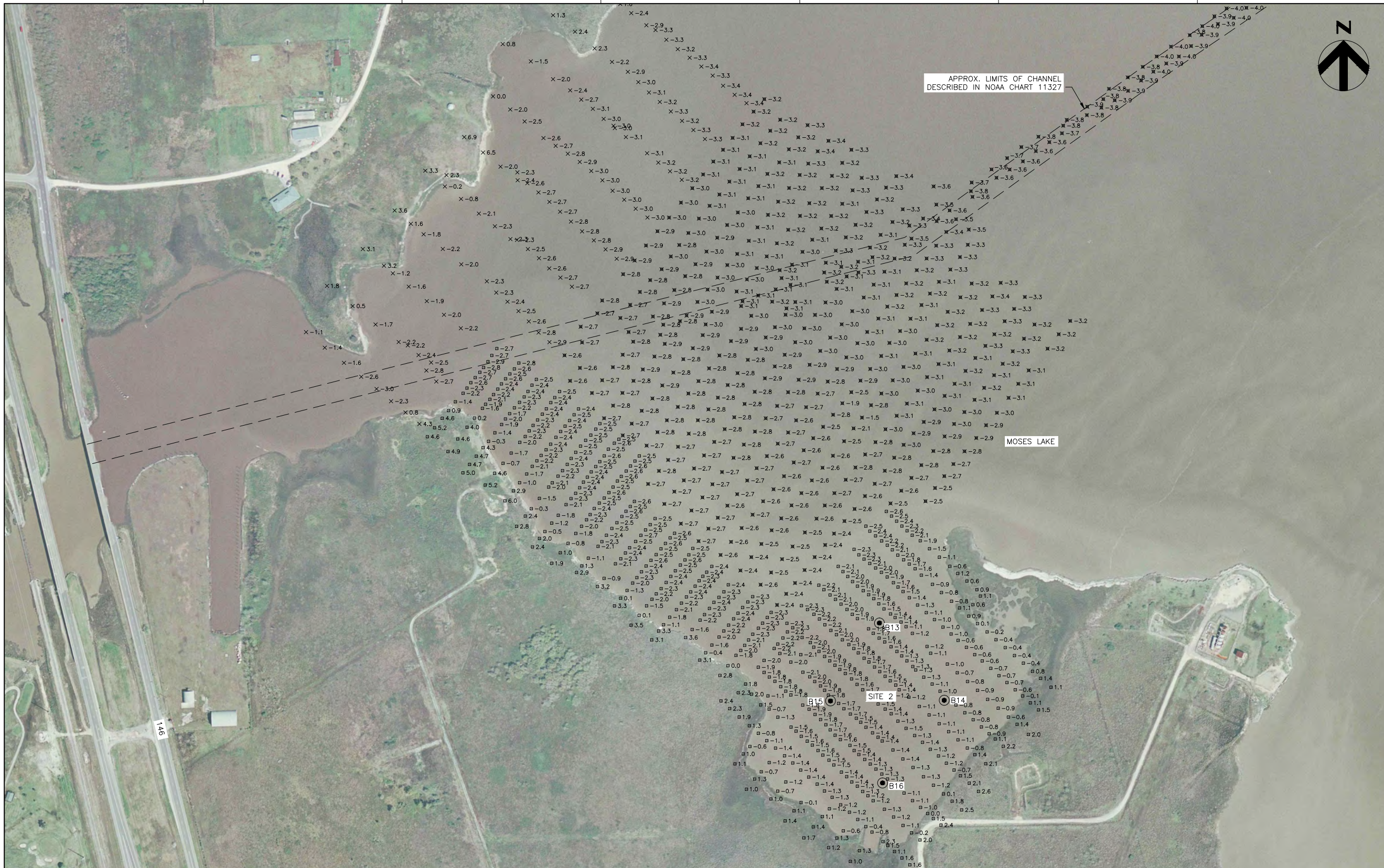
DOLLAR BAY MARSH RESTORATION

EXISTING CONDITIONS - SITE 1

FILENAME 01C-02.dwg  
SCALE

SHEET  
01C-02





NOTES:  
1. REFER TO NOTES ON SHEET 00G-01.

EXISTING CONDITIONS - SITE 2  
SCALE: 0 200' 400'



HDR Engineering, Inc.  
TBPELS Firm  
Registration No. F-754

| ISSUE | DATE       | DESCRIPTION    |
|-------|------------|----------------|
| 0     | 09-01-2020 | ISSUE FOR BIDS |

|                 |               |
|-----------------|---------------|
| PROJECT MANAGER | CAMERON PERRY |
| DESIGNED BY     | C. PERRY      |
| DRAWN BY        | F. MARTINEZ   |
| CHECKED BY      | D. HEILMAN    |
| PROJECT NUMBER  | 10189630      |



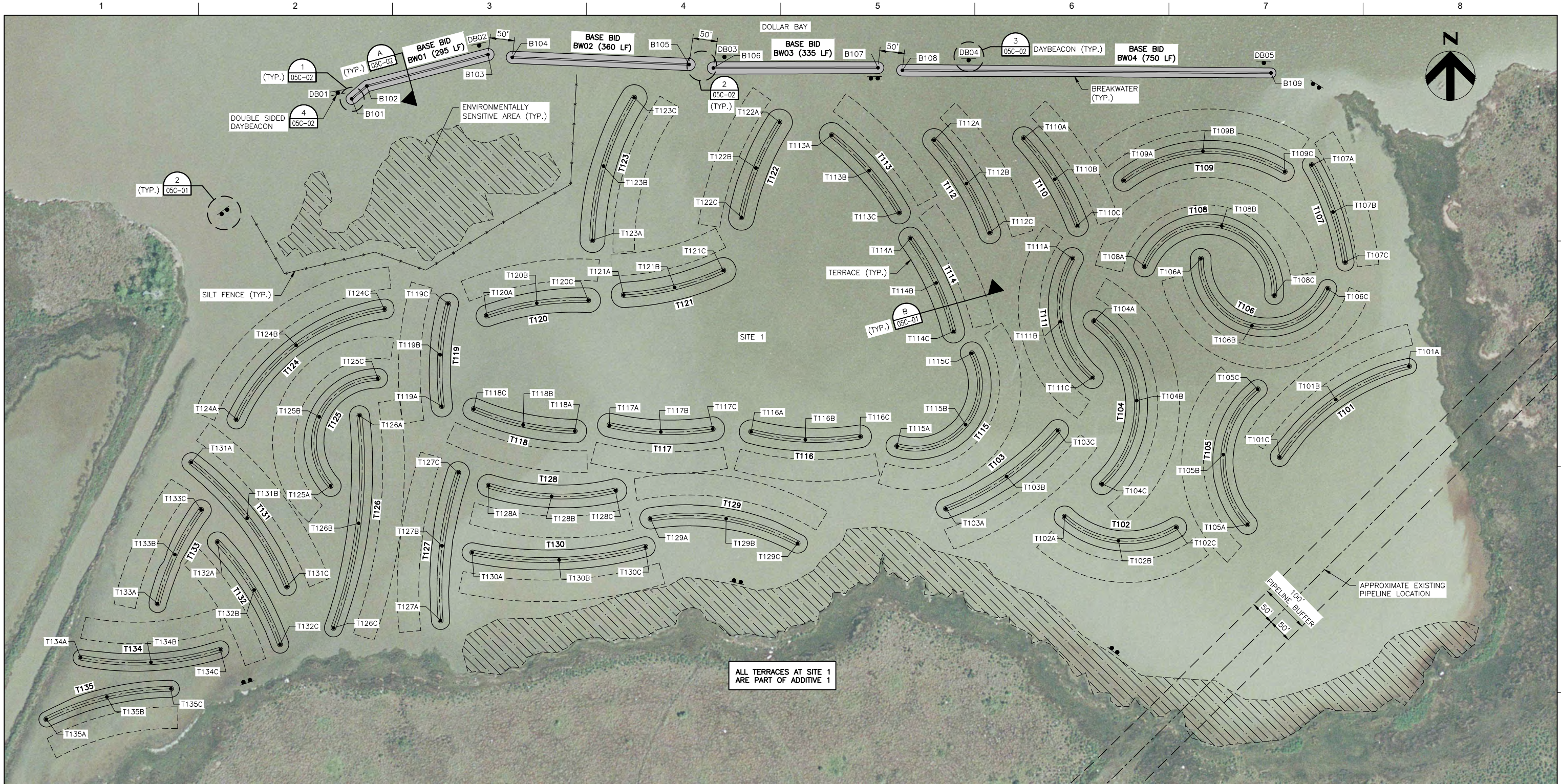
DOLLAR BAY  
MARSH  
RESTORATION

EXISTING CONDITIONS - SITE 2

FILENAME 01C-03.dwg  
SCALE

SHEET  
01C-03





PROJECT LAYOUT SITE 1  
 SCALE: 0 100' 200'

- NOTES:
1. REFER TO NOTES ON SHEET 00G-01.
  2. REFER TO SHEET 04C-01 FOR TERRACE COORDINATE TABLES.



HDR Engineering, Inc.  
 TBPELS Firm  
 Registration No. F-754

| ISSUE | DATE       | DESCRIPTION    |
|-------|------------|----------------|
| 0     | 09-01-2020 | ISSUE FOR BIDS |

|                 |               |
|-----------------|---------------|
| PROJECT MANAGER | CAMERON PERRY |
| DESIGNED BY     | C. PERRY      |
| DRAWN BY        | F. MARTINEZ   |
| CHECKED BY      | D. HEILMAN    |
| PROJECT NUMBER  | 10189630      |



DOLLAR BAY  
 MARSH  
 RESTORATION

PROJECT LAYOUT SITE 1

FILENAME | 02C-01.DWG  
 SCALE | AS SHOWN

SHEET  
**02C-01**





- NOTES:**
1. REFER TO NOTES ON SHEET 00G-01.
  2. REFER TO SHEET 04C-01 FOR TERRACE COORDINATE TABLES.



**PROJECT LAYOUT SITE 2**  
 SCALE: 0 100' 200'  
 4  
 00G-02



| ISSUE | DATE       | DESCRIPTION    |
|-------|------------|----------------|
| 0     | 09-01-2020 | ISSUE FOR BIDS |

|                        |               |
|------------------------|---------------|
| <b>PROJECT MANAGER</b> | CAMERON PERRY |
| DESIGNED BY            | C. PERRY      |
| DRAWN BY               | F. MARTINEZ   |
| CHECKED BY             | D. HEILMAN    |
| <b>PROJECT NUMBER</b>  | 10189630      |

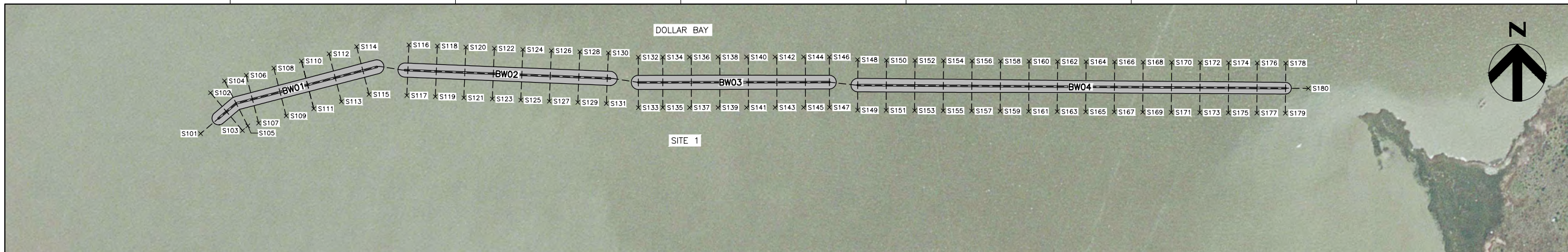


**PROJECT LAYOUT SITE 2**

FILENAME | 02C-02.DWG  
 SCALE | AS SHOWN

SHEET  
**02C-02**





- NOTES:**
1. REFER TO NOTES ON SHEET 00G-01.
  2. REFER TO SHEET 04C-02 FOR SURVEY TRANSECT COORDINATE TABLES.

**SITE 1 – BREAKWATER CONSTRUCTION SURVEY PLAN** 1  
 SCALE: 0 50' 100'



**SITE 2 – BREAKWATER CONSTRUCTION SURVEY PLAN** 2  
 SCALE: 0 50' 100'



HDR Engineering, Inc.  
 TBPELS Firm  
 Registration No. F-754

| ISSUE | DATE       | DESCRIPTION    |
|-------|------------|----------------|
| 0     | 09-01-2020 | ISSUE FOR BIDS |

|                        |               |
|------------------------|---------------|
| <b>PROJECT MANAGER</b> | CAMERON PERRY |
| DESIGNED BY            | C. PERRY      |
| DRAWN BY               | F. MARTINEZ   |
| CHECKED BY             | D. HEILMAN    |
| <b>PROJECT NUMBER</b>  | 10189630      |



**DOLLAR BAY MARSH RESTORATION**

**BREAKWATER CONSTRUCTION SURVEY PLAN**

FILENAME | 03C-01.dwg  
 SCALE |

SHEET  
**03C-01**



| TERRACE COORDINATES |            |           | TERRACE COORDINATES |            |           | TERRACE COORDINATES |            |           |
|---------------------|------------|-----------|---------------------|------------|-----------|---------------------|------------|-----------|
| DESIGNATION         | NORTHING   | EASTING   | DESIGNATION         | NORTHING   | EASTING   | DESIGNATION         | NORTHING   | EASTING   |
| T101A               | 13,722,707 | 3,270,660 | T116C               | 13,722,564 | 3,269,544 | T132B               | 13,722,252 | 3,268,311 |
| T101B               | 13,722,640 | 3,270,512 | T117A               | 13,722,588 | 3,269,034 | T132C               | 13,722,141 | 3,268,364 |
| T101C               | 13,722,523 | 3,270,398 | T117B               | 13,722,574 | 3,269,138 | T133A               | 13,722,225 | 3,268,114 |
| T102A               | 13,722,401 | 3,269,960 | T117C               | 13,722,580 | 3,269,244 | T133B               | 13,722,324 | 3,268,150 |
| T102B               | 13,722,352 | 3,270,069 | T118A               | 13,722,575 | 3,268,963 | T133C               | 13,722,415 | 3,268,203 |
| T102C               | 13,722,379 | 3,270,186 | T118B               | 13,722,588 | 3,268,858 | T134A               | 13,722,114 | 3,267,958 |
| T103A               | 13,722,417 | 3,269,718 | T118C               | 13,722,620 | 3,268,758 | T134B               | 13,722,105 | 3,268,101 |
| T103B               | 13,722,483 | 3,269,842 | T119A               | 13,722,626 | 3,268,693 | T134C               | 13,722,131 | 3,268,242 |
| T103C               | 13,722,576 | 3,269,946 | T119B               | 13,722,731 | 3,268,689 | T135A               | 13,721,989 | 3,267,888 |
| T104A               | 13,722,799 | 3,270,020 | T119C               | 13,722,835 | 3,268,706 | T135B               | 13,722,034 | 3,268,011 |
| T104B               | 13,722,638 | 3,270,107 | T120A               | 13,722,810 | 3,268,784 | T135C               | 13,722,051 | 3,268,142 |
| T104C               | 13,722,468 | 3,270,036 | T120B               | 13,722,836 | 3,268,886 | T201A               | 13,722,175 | 3,257,648 |
| T105A               | 13,722,386 | 3,270,332 | T120C               | 13,722,842 | 3,268,991 | T201B               | 13,722,287 | 3,257,542 |
| T105B               | 13,722,528 | 3,270,283 | T121A               | 13,722,853 | 3,269,063 | T201C               | 13,722,371 | 3,257,413 |
| T105C               | 13,722,661 | 3,270,353 | T121B               | 13,722,868 | 3,269,166 | T202A               | 13,722,322 | 3,257,381 |
| T106A               | 13,722,926 | 3,270,237 | T121C               | 13,722,902 | 3,269,265 | T202B               | 13,722,237 | 3,257,510 |
| T106B               | 13,722,790 | 3,270,341 | T122A               | 13,723,204 | 3,269,380 | T202C               | 13,722,125 | 3,257,616 |
| T106C               | 13,722,865 | 3,270,495 | T122B               | 13,723,111 | 3,269,332 | T203A               | 13,722,249 | 3,257,312 |
| T107A               | 13,723,117 | 3,270,463 | T122C               | 13,723,010 | 3,269,302 | T203B               | 13,722,394 | 3,257,294 |
| T107B               | 13,723,021 | 3,270,506 | T123A               | 13,722,964 | 3,268,999 | T203C               | 13,722,466 | 3,257,421 |
| T107C               | 13,722,920 | 3,270,531 | T123B               | 13,723,115 | 3,269,022 | T204A               | 13,722,142 | 3,257,218 |
| T108A               | 13,722,911 | 3,270,123 | T123C               | 13,723,254 | 3,269,084 | T204B               | 13,722,239 | 3,257,147 |
| T108B               | 13,722,993 | 3,270,279 | T124A               | 13,722,600 | 3,268,275 | T204C               | 13,722,390 | 3,257,157 |
| T108C               | 13,722,852 | 3,270,386 | T124B               | 13,722,750 | 3,268,397 | T205A               | 13,722,088 | 3,257,088 |
| T109A               | 13,723,086 | 3,270,081 | T124C               | 13,722,824 | 3,268,576 | T205B               | 13,722,210 | 3,257,030 |
| T109B               | 13,723,145 | 3,270,241 | T125A               | 13,722,464 | 3,268,466 | T205C               | 13,722,343 | 3,257,017 |
| T109C               | 13,723,103 | 3,270,408 | T125B               | 13,722,605 | 3,268,443 | T206A               | 13,721,974 | 3,256,921 |
| T110A               | 13,723,172 | 3,269,877 | T125C               | 13,722,683 | 3,268,562 | T206B               | 13,722,151 | 3,256,914 |
| T110B               | 13,723,088 | 3,269,940 | T126A               | 13,722,607 | 3,268,525 | T206C               | 13,722,315 | 3,256,849 |
| T110C               | 13,722,994 | 3,269,986 | T126B               | 13,722,388 | 3,268,524 | T207A               | 13,721,935 | 3,256,779 |
| T111A               | 13,722,927 | 3,269,976 | T126C               | 13,722,175 | 3,268,472 | T207B               | 13,722,029 | 3,256,802 |
| T111B               | 13,722,798 | 3,269,952 | T127A               | 13,722,190 | 3,268,690 | T207C               | 13,722,125 | 3,256,787 |
| T111C               | 13,722,685 | 3,270,016 | T127B               | 13,722,342 | 3,268,693 | T208A               | 13,721,919 | 3,256,863 |
| T112A               | 13,723,168 | 3,269,694 | T127C               | 13,722,491 | 3,268,726 | T208B               | 13,721,860 | 3,256,976 |
| T112B               | 13,723,079 | 3,269,760 | T128A               | 13,722,464 | 3,268,788 | T208C               | 13,721,888 | 3,257,100 |
| T112C               | 13,722,980 | 3,269,808 | T128B               | 13,722,443 | 3,268,916 | T209A               | 13,721,941 | 3,257,020 |
| T113A               | 13,723,178 | 3,269,486 | T128C               | 13,722,455 | 3,269,046 | T209B               | 13,721,943 | 3,257,142 |
| T113B               | 13,723,106 | 3,269,562 | T129A               | 13,722,397 | 3,269,117 | T209C               | 13,721,869 | 3,257,240 |
| T113C               | 13,723,020 | 3,269,623 | T129B               | 13,722,397 | 3,269,271 | T210A               | 13,722,035 | 3,257,241 |
| T114A               | 13,722,968 | 3,269,646 | T129C               | 13,722,347 | 3,269,417 | T210B               | 13,721,981 | 3,257,331 |
| T114B               | 13,722,877 | 3,269,699 | T130A               | 13,722,328 | 3,268,755 | T210C               | 13,721,912 | 3,257,409 |
| T114C               | 13,722,778 | 3,269,734 | T130B               | 13,722,313 | 3,268,931 | T211A               | 13,722,131 | 3,257,326 |
| T115A               | 13,722,545 | 3,269,619 | T130C               | 13,722,340 | 3,269,107 | T211B               | 13,722,079 | 3,257,411 |
| T115B               | 13,722,588 | 3,269,758 | T131A               | 13,722,512 | 3,268,183 | T211C               | 13,722,012 | 3,257,485 |
| T115C               | 13,722,734 | 3,269,771 | T131B               | 13,722,398 | 3,268,297 | T212A               | 13,721,732 | 3,257,001 |
| T116A               | 13,722,574 | 3,269,322 | T131C               | 13,722,259 | 3,268,377 | T212B               | 13,721,777 | 3,257,188 |
| T116B               | 13,722,558 | 3,269,432 | T132A               | 13,722,350 | 3,268,236 | T212C               | 13,721,871 | 3,257,355 |

| BREAKWATER COORDINATES |            |           |
|------------------------|------------|-----------|
| DESIGNATION            | NORTHING   | EASTING   |
| B101                   | 13,723,252 | 3,268,509 |
| B102                   | 13,723,278 | 3,268,540 |
| B103                   | 13,723,342 | 3,268,787 |
| B104                   | 13,723,336 | 3,268,836 |
| B105                   | 13,723,322 | 3,269,196 |
| B106                   | 13,723,315 | 3,269,245 |
| B107                   | 13,723,315 | 3,269,580 |
| B108                   | 13,723,310 | 3,269,630 |
| B109                   | 13,723,304 | 3,270,380 |
| B201                   | 13,722,586 | 3,257,367 |
| B202                   | 13,722,496 | 3,257,086 |
| B203                   | 13,722,459 | 3,257,039 |
| B204                   | 13,722,343 | 3,256,735 |
| B205                   | 13,722,358 | 3,256,627 |
| B206                   | 13,722,477 | 3,256,448 |
| B207                   | 13,722,496 | 3,256,418 |
| B208                   | 13,722,533 | 3,256,364 |
| B209                   | 13,722,629 | 3,256,243 |
| B210                   | 13,722,651 | 3,256,216 |
| B211                   | 13,722,749 | 3,256,090 |
| B212                   | 13,722,809 | 3,256,036 |
| B213                   | 13,722,835 | 3,256,013 |
| B214                   | 13,723,007 | 3,255,853 |
| B215                   | 13,723,037 | 3,255,835 |
| B216                   | 13,723,292 | 3,255,677 |

D  
C  
B  
A



| ISSUE | DATE       | DESCRIPTION    |
|-------|------------|----------------|
| 0     | 09-01-2020 | ISSUE FOR BIDS |

|                 |               |
|-----------------|---------------|
| PROJECT MANAGER | CAMERON PERRY |
| DESIGNED BY     | C. PERRY      |
| DRAWN BY        | F. MARTINEZ   |
| CHECKED BY      | D. HEILMAN    |
| PROJECT NUMBER  | 10189630      |



COORDINATE TABLES

FILENAME | 04C-01.dwg  
SCALE |

SHEET  
**04C-01**



| TRANSECT COORDINATES |            |           | TRANSECT COORDINATES |            |           | TRANSECT COORDINATES |            |           |
|----------------------|------------|-----------|----------------------|------------|-----------|----------------------|------------|-----------|
| DESIGNATION          | NORTHING   | EASTING   | DESIGNATION          | NORTHING   | EASTING   | DESIGNATION          | NORTHING   | EASTING   |
| S101                 | 13,723,225 | 3,268,478 | S128                 | 13,723,368 | 3,269,143 | S155                 | 13,723,265 | 3,269,780 |
| S102                 | 13,723,296 | 3,268,495 | S129                 | 13,723,280 | 3,269,139 | S156                 | 13,723,352 | 3,269,830 |
| S103                 | 13,723,230 | 3,268,551 | S130                 | 13,723,366 | 3,269,193 | S157                 | 13,723,265 | 3,269,830 |
| S104                 | 13,723,317 | 3,268,520 | S131                 | 13,723,278 | 3,269,189 | S158                 | 13,723,352 | 3,269,880 |
| S105                 | 13,723,239 | 3,268,561 | S132                 | 13,723,359 | 3,269,245 | S159                 | 13,723,264 | 3,269,880 |
| S106                 | 13,723,327 | 3,268,558 | S133                 | 13,723,270 | 3,269,245 | S160                 | 13,723,351 | 3,269,930 |
| S107                 | 13,723,243 | 3,268,579 | S134                 | 13,723,359 | 3,269,288 | S161                 | 13,723,264 | 3,269,930 |
| S108                 | 13,723,340 | 3,268,606 | S135                 | 13,723,270 | 3,269,288 | S162                 | 13,723,351 | 3,269,980 |
| S109                 | 13,723,256 | 3,268,628 | S136                 | 13,723,359 | 3,269,335 | S163                 | 13,723,264 | 3,269,980 |
| S110                 | 13,723,352 | 3,268,655 | S137                 | 13,723,271 | 3,269,335 | S164                 | 13,723,351 | 3,270,030 |
| S111                 | 13,723,269 | 3,268,676 | S138                 | 13,723,359 | 3,269,385 | S165                 | 13,723,263 | 3,270,030 |
| S112                 | 13,723,365 | 3,268,703 | S139                 | 13,723,271 | 3,269,385 | S166                 | 13,723,350 | 3,270,080 |
| S113                 | 13,723,281 | 3,268,725 | S140                 | 13,723,359 | 3,269,435 | S167                 | 13,723,263 | 3,270,080 |
| S114                 | 13,723,377 | 3,268,751 | S141                 | 13,723,271 | 3,269,435 | S168                 | 13,723,350 | 3,270,130 |
| S115                 | 13,723,294 | 3,268,773 | S142                 | 13,723,359 | 3,269,485 | S169                 | 13,723,262 | 3,270,130 |
| S116                 | 13,723,380 | 3,268,843 | S143                 | 13,723,271 | 3,269,485 | S170                 | 13,723,350 | 3,270,180 |
| S117                 | 13,723,292 | 3,268,839 | S144                 | 13,723,359 | 3,269,535 | S171                 | 13,723,262 | 3,270,180 |
| S118                 | 13,723,378 | 3,268,893 | S145                 | 13,723,271 | 3,269,535 | S172                 | 13,723,349 | 3,270,230 |
| S119                 | 13,723,290 | 3,268,889 | S146                 | 13,723,359 | 3,269,580 | S173                 | 13,723,262 | 3,270,230 |
| S120                 | 13,723,376 | 3,268,943 | S147                 | 13,723,271 | 3,269,580 | S174                 | 13,723,349 | 3,270,280 |
| S121                 | 13,723,288 | 3,268,939 | S148                 | 13,723,354 | 3,269,629 | S175                 | 13,723,261 | 3,270,280 |
| S122                 | 13,723,374 | 3,268,993 | S149                 | 13,723,266 | 3,269,630 | S176                 | 13,723,349 | 3,270,330 |
| S123                 | 13,723,286 | 3,268,989 | S150                 | 13,723,353 | 3,269,680 | S177                 | 13,723,261 | 3,270,330 |
| S124                 | 13,723,372 | 3,269,043 | S151                 | 13,723,266 | 3,269,680 | S178                 | 13,723,348 | 3,270,380 |
| S125                 | 13,723,284 | 3,269,039 | S152                 | 13,723,353 | 3,269,730 | S179                 | 13,723,261 | 3,270,380 |
| S126                 | 13,723,370 | 3,269,093 | S153                 | 13,723,265 | 3,269,730 | S180                 | 13,723,304 | 3,270,420 |
| S127                 | 13,723,282 | 3,269,089 | S154                 | 13,723,353 | 3,269,780 |                      |            |           |

| TRANSECT COORDINATES |            |           | TRANSECT COORDINATES |            |           |
|----------------------|------------|-----------|----------------------|------------|-----------|
| DESIGNATION          | NORTHING   | EASTING   | DESIGNATION          | NORTHING   | EASTING   |
| S201                 | 13,722,596 | 3,257,400 | S247                 | 13,722,518 | 3,256,320 |
| S202                 | 13,722,626 | 3,257,354 | S248                 | 13,722,611 | 3,256,330 |
| S203                 | 13,722,545 | 3,257,380 | S249                 | 13,722,549 | 3,256,281 |
| S204                 | 13,722,611 | 3,257,307 | S250                 | 13,722,642 | 3,256,291 |
| S205                 | 13,722,530 | 3,257,333 | S251                 | 13,722,580 | 3,256,242 |
| S206                 | 13,722,596 | 3,257,259 | S252                 | 13,722,660 | 3,256,268 |
| S207                 | 13,722,515 | 3,257,285 | S253                 | 13,722,599 | 3,256,219 |
| S208                 | 13,722,580 | 3,257,212 | S254                 | 13,722,682 | 3,256,240 |
| S209                 | 13,722,499 | 3,257,237 | S255                 | 13,722,619 | 3,256,191 |
| S210                 | 13,722,565 | 3,257,164 | S256                 | 13,722,706 | 3,256,210 |
| S211                 | 13,722,484 | 3,257,190 | S257                 | 13,722,643 | 3,256,161 |
| S212                 | 13,722,550 | 3,257,116 | S258                 | 13,722,737 | 3,256,171 |
| S213                 | 13,722,469 | 3,257,142 | S259                 | 13,722,674 | 3,256,122 |
| S214                 | 13,722,536 | 3,257,073 | S260                 | 13,722,768 | 3,256,131 |
| S215                 | 13,722,455 | 3,257,099 | S261                 | 13,722,705 | 3,256,082 |
| S216                 | 13,722,492 | 3,257,013 | S262                 | 13,722,781 | 3,256,115 |
| S217                 | 13,722,418 | 3,257,041 | S263                 | 13,722,720 | 3,256,063 |
| S218                 | 13,722,474 | 3,256,966 | S264                 | 13,722,798 | 3,256,099 |
| S219                 | 13,722,400 | 3,256,995 | S265                 | 13,722,746 | 3,256,040 |
| S220                 | 13,722,456 | 3,256,920 | S266                 | 13,722,835 | 3,256,066 |
| S221                 | 13,722,382 | 3,256,948 | S267                 | 13,722,783 | 3,256,007 |
| S222                 | 13,722,438 | 3,256,873 | S268                 | 13,722,874 | 3,256,031 |
| S223                 | 13,722,364 | 3,256,901 | S269                 | 13,722,822 | 3,255,972 |
| S224                 | 13,722,420 | 3,256,826 | S270                 | 13,722,912 | 3,255,997 |
| S225                 | 13,722,346 | 3,256,855 | S271                 | 13,722,859 | 3,255,939 |
| S226                 | 13,722,402 | 3,256,780 | S272                 | 13,722,949 | 3,255,964 |
| S227                 | 13,722,328 | 3,256,808 | S273                 | 13,722,896 | 3,255,905 |
| S228                 | 13,722,384 | 3,256,733 | S274                 | 13,722,986 | 3,255,930 |
| S229                 | 13,722,311 | 3,256,761 | S275                 | 13,722,933 | 3,255,872 |
| S230                 | 13,722,395 | 3,256,642 | S276                 | 13,723,023 | 3,255,897 |
| S231                 | 13,722,330 | 3,256,599 | S277                 | 13,722,970 | 3,255,838 |
| S232                 | 13,722,423 | 3,256,601 | S278                 | 13,723,057 | 3,255,868 |
| S233                 | 13,722,357 | 3,256,557 | S279                 | 13,723,016 | 3,255,801 |
| S234                 | 13,722,451 | 3,256,559 | S280                 | 13,723,100 | 3,255,841 |
| S235                 | 13,722,385 | 3,256,515 | S281                 | 13,723,059 | 3,255,775 |
| S236                 | 13,722,478 | 3,256,518 | S282                 | 13,723,143 | 3,255,815 |
| S237                 | 13,722,413 | 3,256,474 | S283                 | 13,723,101 | 3,255,748 |
| S238                 | 13,722,506 | 3,256,476 | S284                 | 13,723,185 | 3,255,789 |
| S239                 | 13,722,441 | 3,256,432 | S285                 | 13,723,144 | 3,255,722 |
| S240                 | 13,722,530 | 3,256,441 | S286                 | 13,723,228 | 3,255,763 |
| S241                 | 13,722,464 | 3,256,397 | S287                 | 13,723,186 | 3,255,696 |
| S242                 | 13,722,552 | 3,256,407 | S288                 | 13,723,270 | 3,255,737 |
| S243                 | 13,722,486 | 3,256,363 | S289                 | 13,723,229 | 3,255,670 |
| S244                 | 13,722,565 | 3,256,390 | S290                 | 13,723,313 | 3,255,710 |
| S245                 | 13,722,502 | 3,256,340 | S291                 | 13,723,272 | 3,255,643 |
| S246                 | 13,722,579 | 3,256,370 | S292                 | 13,723,326 | 3,255,655 |

| DAYBEACON COORDINATE |            |           |
|----------------------|------------|-----------|
| DESIGNATION          | NORTHING   | EASTING   |
| DB01                 | 13,723,264 | 3,268,481 |
| DB02                 | 13,723,360 | 3,268,769 |
| DB03                 | 13,723,337 | 3,269,268 |
| DB04                 | 13,723,330 | 3,269,764 |
| DB05                 | 13,723,325 | 3,270,365 |
| DB06                 | 13,722,594 | 3,257,329 |
| DB07                 | 13,722,469 | 3,257,006 |
| DB08                 | 13,722,383 | 3,256,626 |
| DB09                 | 13,722,621 | 3,256,287 |
| DB10                 | 13,722,975 | 3,255,911 |
| DB11                 | 13,723,287 | 3,255,704 |
| DB12                 | 13,723,303 | 3,255,653 |

D

C

B

A



| ISSUE | DATE       | DESCRIPTION    |
|-------|------------|----------------|
| 0     | 09-01-2020 | ISSUE FOR BIDS |

|                        |               |
|------------------------|---------------|
| <b>PROJECT MANAGER</b> | CAMERON PERRY |
| DESIGNED BY            | C. PERRY      |
| DRAWN BY               | F. MARTINEZ   |
| CHECKED BY             | D. HEILMAN    |
| <b>PROJECT NUMBER</b>  | 10189630      |



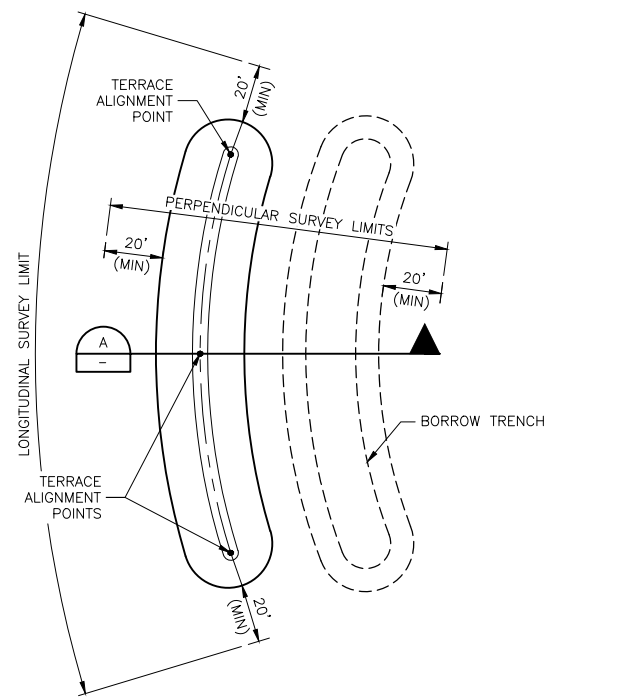
**DOLLAR BAY  
 MARSH  
 RESTORATION**

**COORDINATE TABLES**

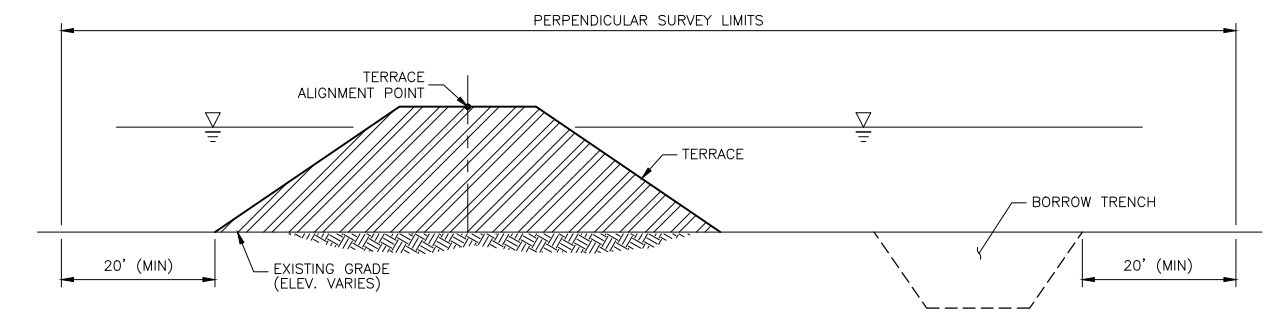
FILENAME | 04C-02.dwg  
 SCALE |

SHEET  
**04C-02**

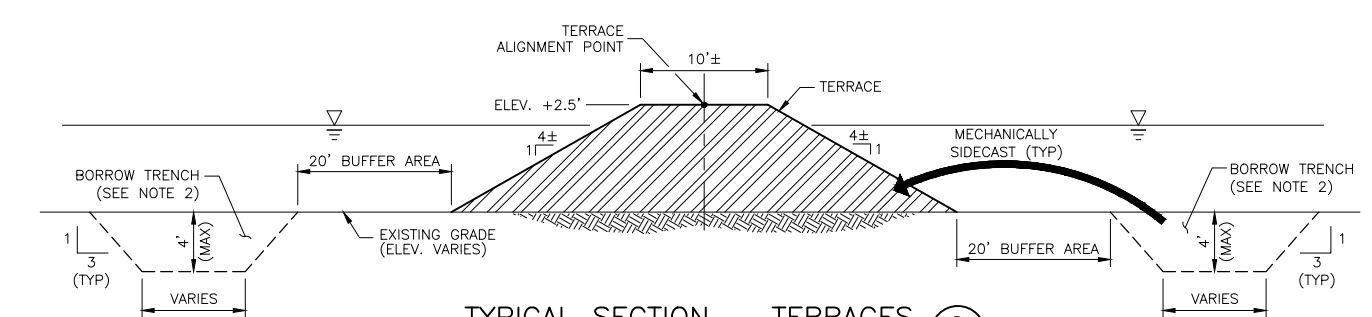




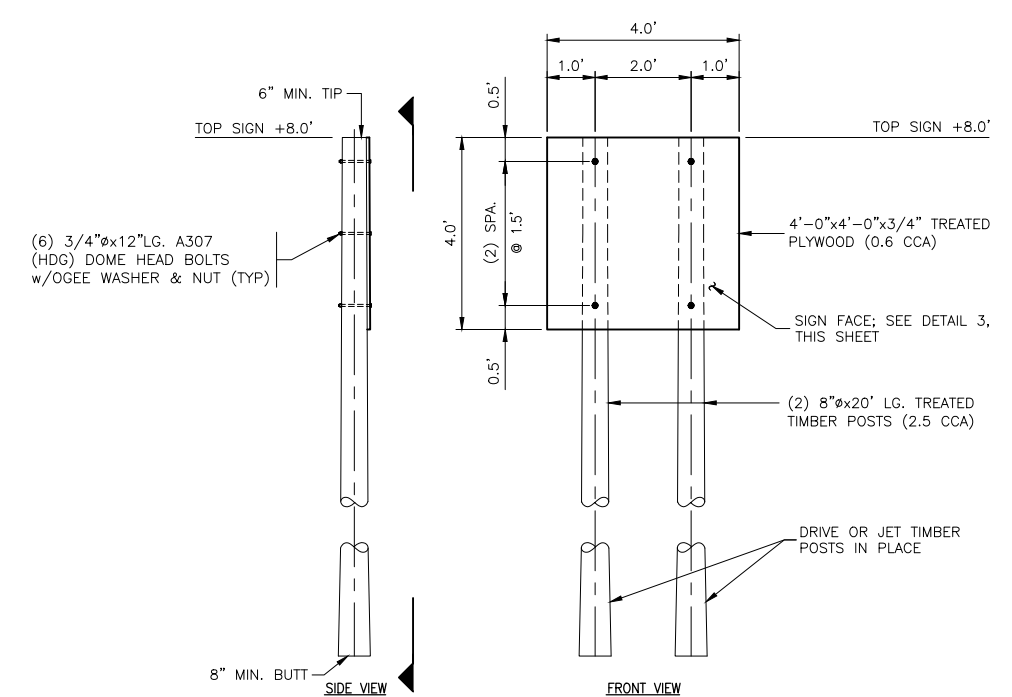
**TYPICAL DETAIL - TERRACE SURVEY LIMITS**  
SCALE: NOT TO SCALE



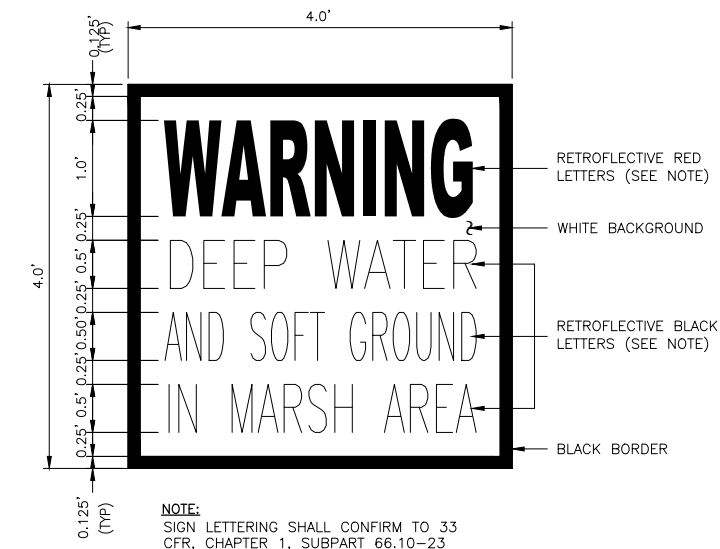
**TYPICAL SECTION - TERRACE SURVEY LIMITS**  
SCALE: NOT TO SCALE



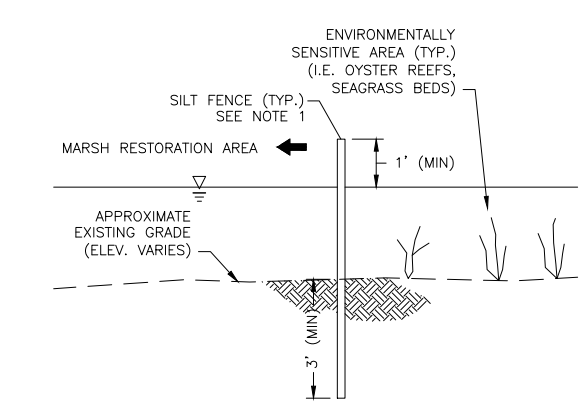
**TYPICAL SECTION - TERRACES**  
SCALE: NOT TO SCALE



**TYPICAL WARNING SIGN**  
SCALE: NOT TO SCALE



**SIGN FACE**  
SCALE: NOT TO SCALE



**TYPICAL DETAIL - SILT FENCE**  
SCALE: NOT TO SCALE

- NOTES:**
1. REFER TO NOTES ON OOG-01
  2. BORROW TRENCH LOCATIONS SHALL BE AS SHOWN ON SHEET O2C-01 AND O2C-02.

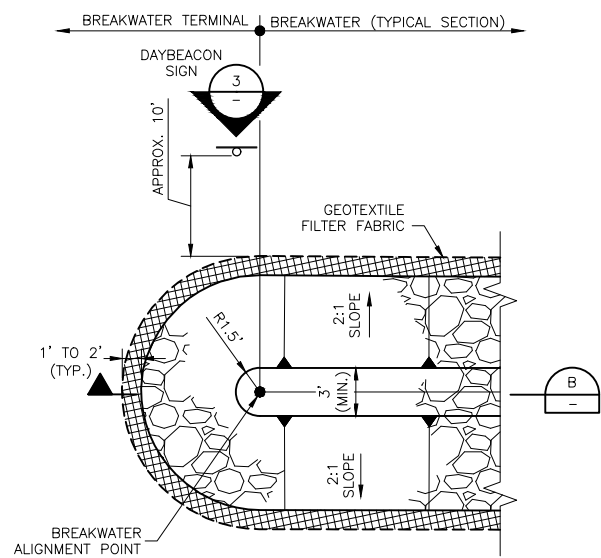


| ISSUE | DATE       | DESCRIPTION    |
|-------|------------|----------------|
| 0     | 09-01-2020 | ISSUE FOR BIDS |

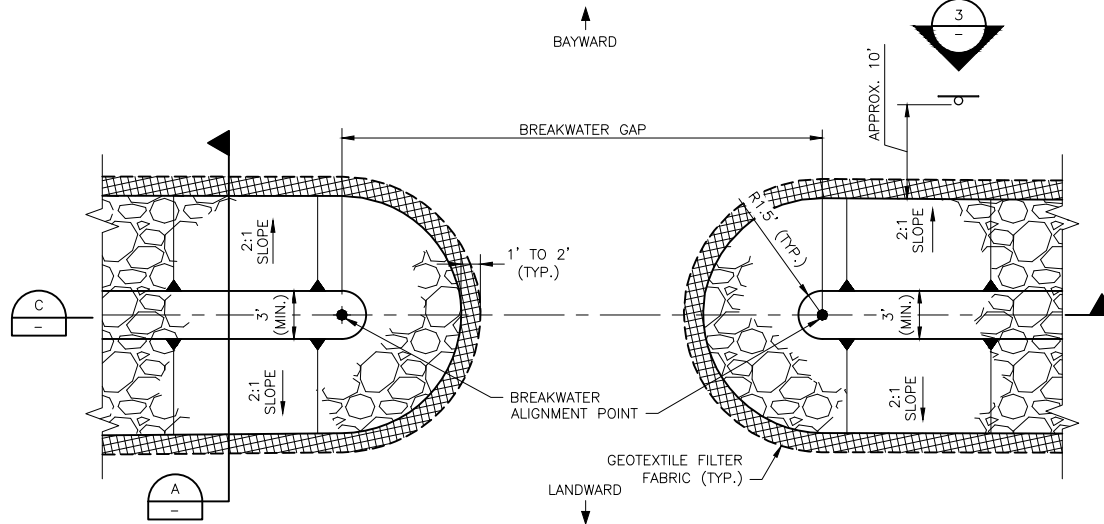
|                        |               |
|------------------------|---------------|
| <b>PROJECT MANAGER</b> | CAMERON PERRY |
| DESIGNED BY            | C. PERRY      |
| DRAWN BY               | F. MARTINEZ   |
| CHECKED BY             | D. HEILMAN    |
| <b>PROJECT NUMBER</b>  | 10189630      |



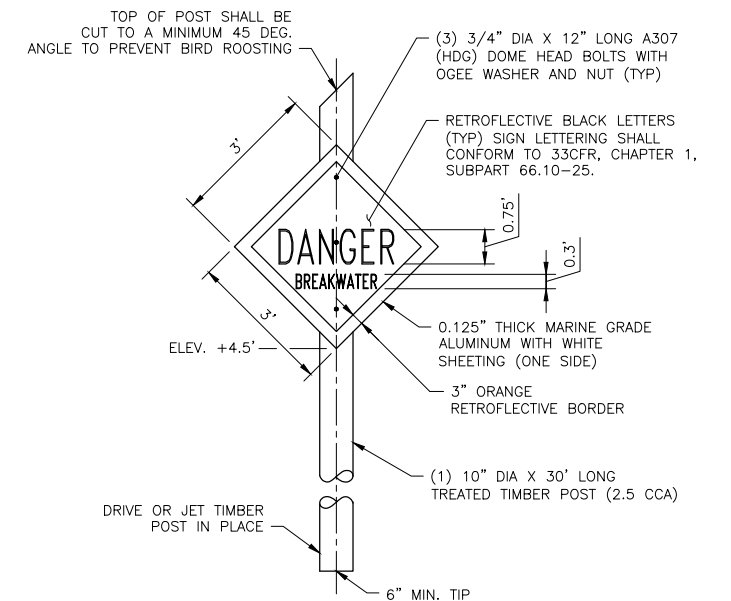




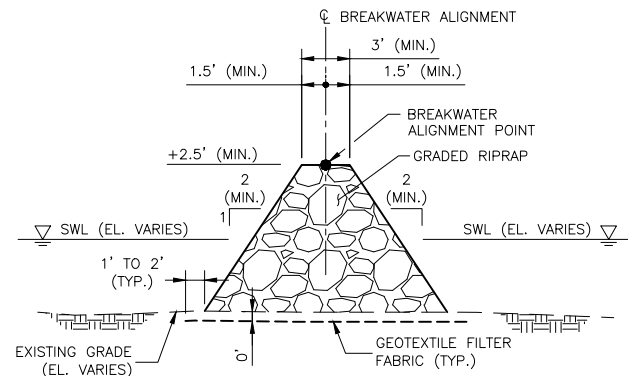
**TYPICAL DETAIL - BREAKWATER TERMINAL**  
SCALE: N.T.S.



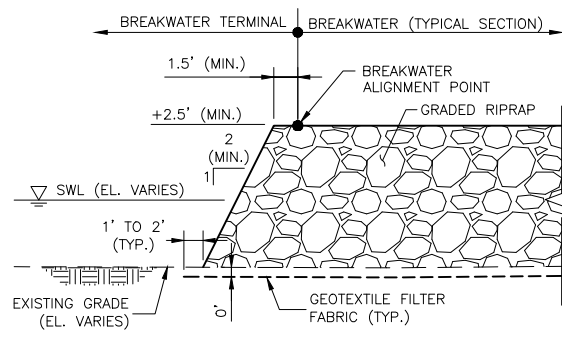
**TYPICAL DETAIL - BREAKWATER GAP**  
SCALE: N.T.S.



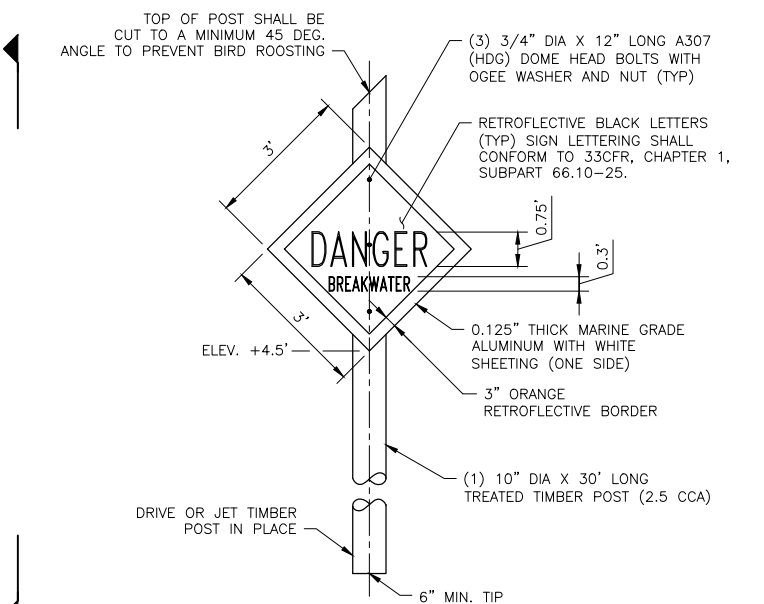
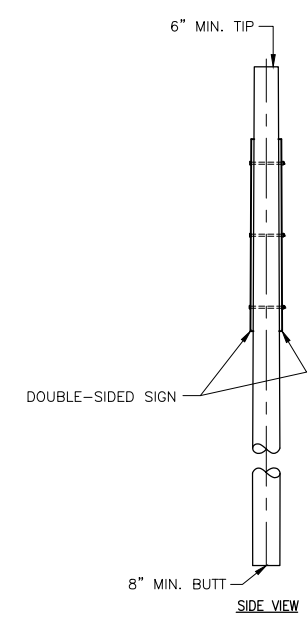
**TYPICAL DETAIL - BREAKWATER DAYBEACON SIGN**  
SCALE: N.T.S.



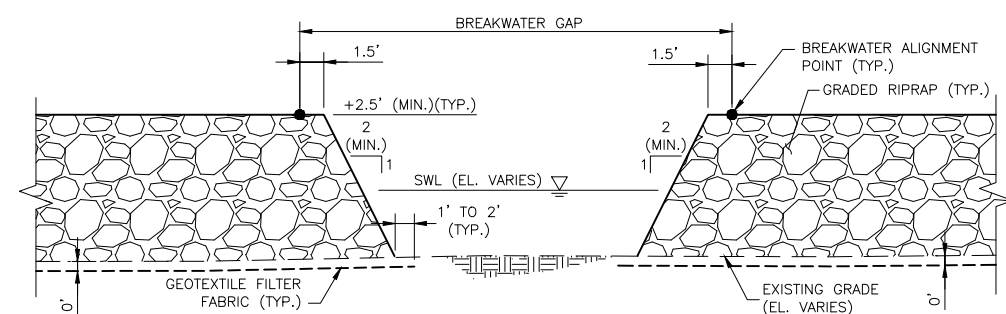
**TYPICAL SECTION - BREAKWATER**  
SCALE: N.T.S.



**TYPICAL SECTION - BREAKWATER TERMINAL**  
SCALE: N.T.S.



**TYPICAL DETAIL - DOUBLE SIDED BREAKWATER DAYBEACON SIGN**  
SCALE: N.T.S.



**TYPICAL SECTION - BREAKWATER GAP**  
SCALE: N.T.S.

- NOTE:**
- REFER TO NOTES ON SHEET 00G-01.
  - GEOTEXTILE FILTER FABRIC SHOWN BELOW EXISTING GRADE FOR CLARITY. ACTUAL PLACEMENT WILL BE DIRECTLY ON EXISTING GRADE IN CONTACT WITH GRADED RIPRAP.



| ISSUE | DATE       | DESCRIPTION    |
|-------|------------|----------------|
| 0     | 09-01-2020 | ISSUE FOR BIDS |

|                        |               |
|------------------------|---------------|
| <b>PROJECT MANAGER</b> | CAMERON PERRY |
| DESIGNED BY            | C. PERRY      |
| DRAWN BY               | F. MARTINEZ   |
| CHECKED BY             | D. HEILMAN    |
| <b>PROJECT NUMBER</b>  | 10189630      |



**DOLLAR BAY MARSH RESTORATION**

**TYPICAL SECTIONS AND DETAILS - BREAKWATERS**

FILENAME | 05C-02.DWG  
SCALE | AS SHOWN

SHEET  
**05C-02**