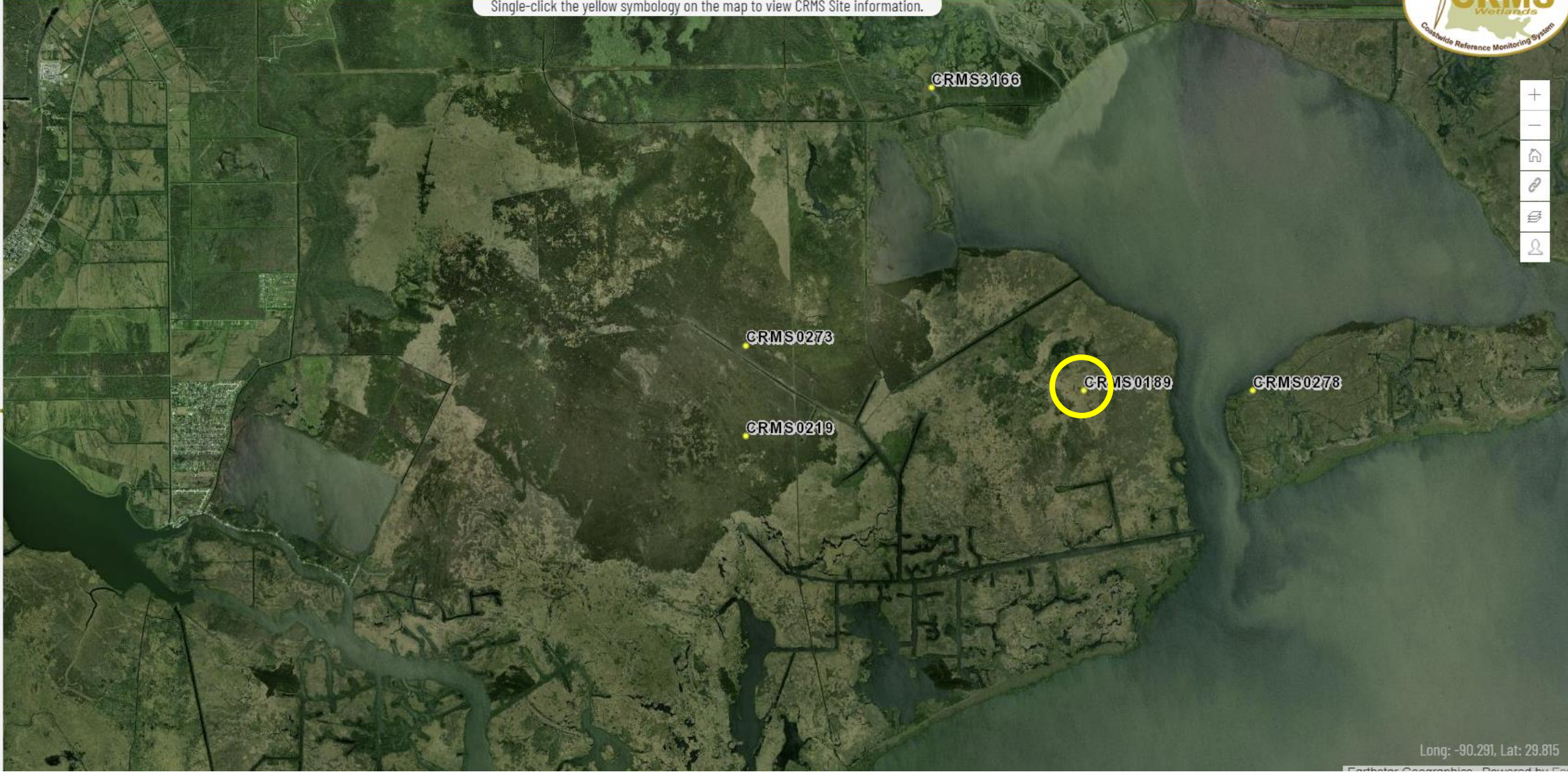




Single-click the yellow symbology on the map to view CRMS Site information.

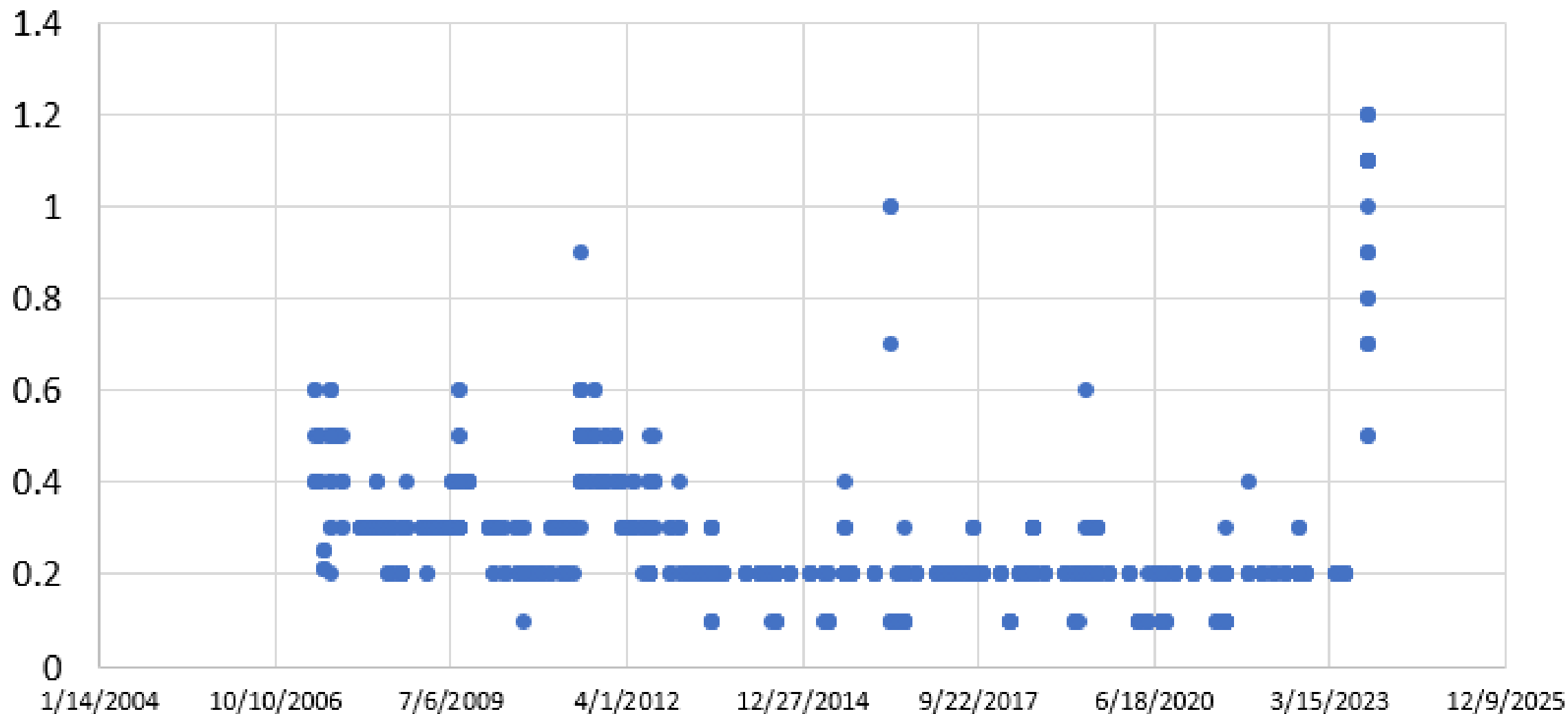
- ayers
- CRMS
- Stations
- CWPPRA
- Hydrologic Basins
- Vegetation
- Soils
- Public Lands
- Master Plan
- Land Change
- Elevation Survey
- Land/Water
- HUC12
- Base Layers

Legend
CRMS Site



Map navigation controls: +, -, Home, Link, Full Screen, User Profile

CRMS 189 pore water salinity



Mean 2023 Growing Season Salinity (March 1 - Oct. 31): 0.43 (ppt)

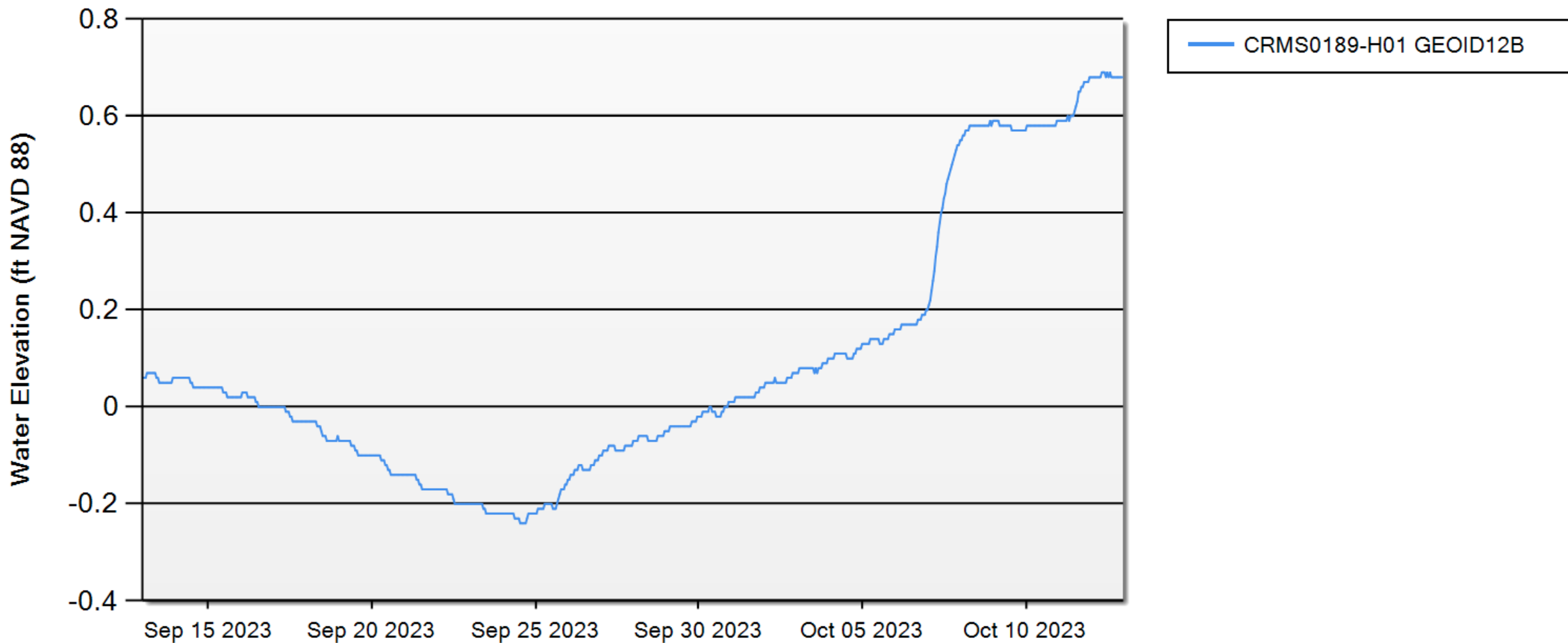
Water Salinity (ppt) at the CRMS hydro station, CRMS0189-H01.

	5/2007 - 10/2023	10/2022 - 10/2023	Mar 1 - Jun 30, 2023	Jul 1 - Oct 31, 2023	Nov 1 - Feb 28, 2023
Min	0.10	0.10	0.20	0.10	0.16
Mean	0.43	0.41	0.29	0.74	0.22
Max	1.80	1.80	0.40	1.80	0.30

Water Elevation (ft. NAVD 88) at the CRMS hydro station, CRMS0189-H01.

	ft. NAVD88, GEOID99	ft. NAVD88, GEOID12B				
	9/2007 - 9/2013	-	-	-	-	-
Min	0.58	-	-	-	-	-
Mean	1.34	-	-	-	-	-
Max	5.00	-	-	-	-	-

Water Surface Elevation



September 13 2023 - October 12 2023
Data Source: Continuous Hourly Observations

