



N



A

0

3,000

6,000

12,000 Feet

Maxar



Maximum fetch
2100'

103 linear feet

Low marsh planting
areas 1,274 sqft

Oyster shell bags placed in
front of coir logs

Mean Low Water

Ebb

Flood

211 linear feet

Mean High Water

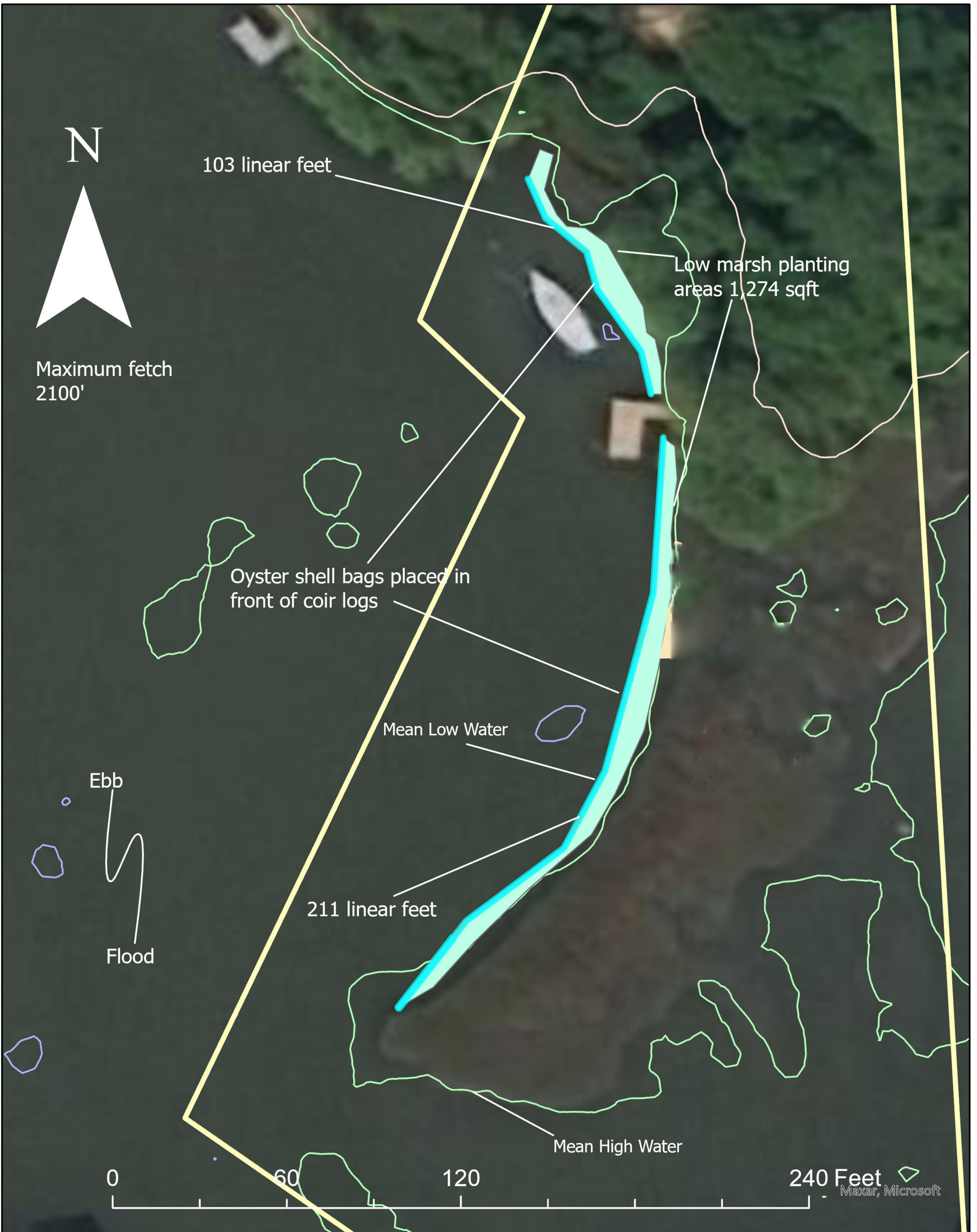
0

60

120

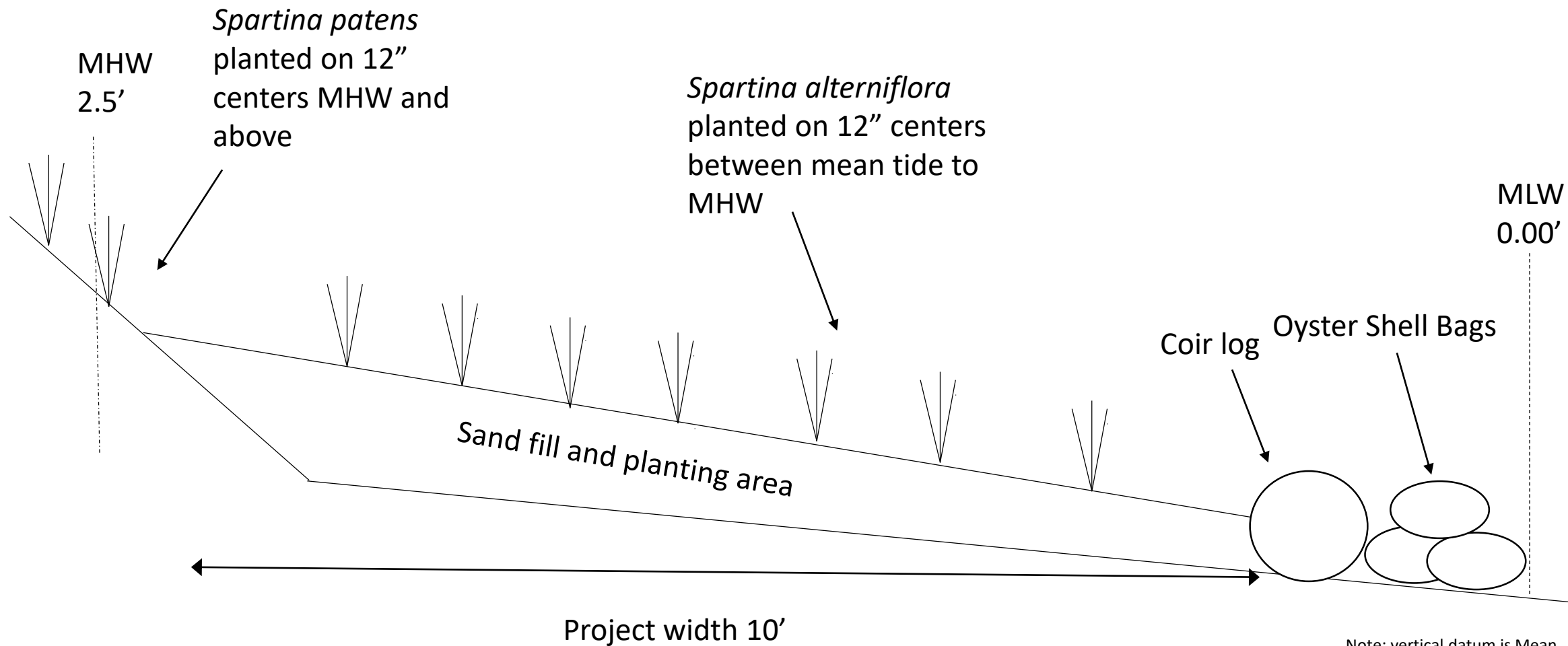
240 Feet

Maxar, Microsoft



Cross-section: A-A'

Note: not to scale



MHW
2.5'

Spartina patens
planted on 12"
centers MHW and
above

Spartina alterniflora
planted on 12" centers
between mean tide to
MHW

MLW
0.00'

Sand fill and planting area

Coir log
Oyster Shell Bags

Project width 10'

Note: vertical datum is Mean
Sea Level

Construction Notes

- 1. Wetlands grasses will be installed on 12-inch centers.
- 2. Plant mortality will be addressed by replacing plants during the next available growing season.
- 3. Wetland planting will achieve an 85% coverage within two full growing seasons to be considered successful.
- 4. Oyster shell bags shall be stacked three high.
- 5. Sand shall be Vulcan White Sand # 31152.
- 6. Construction access route will be protected by timber mats and will be reseeded following construction.
- 7. All existing oysters will be hand harvested and placed in front of shell bags.